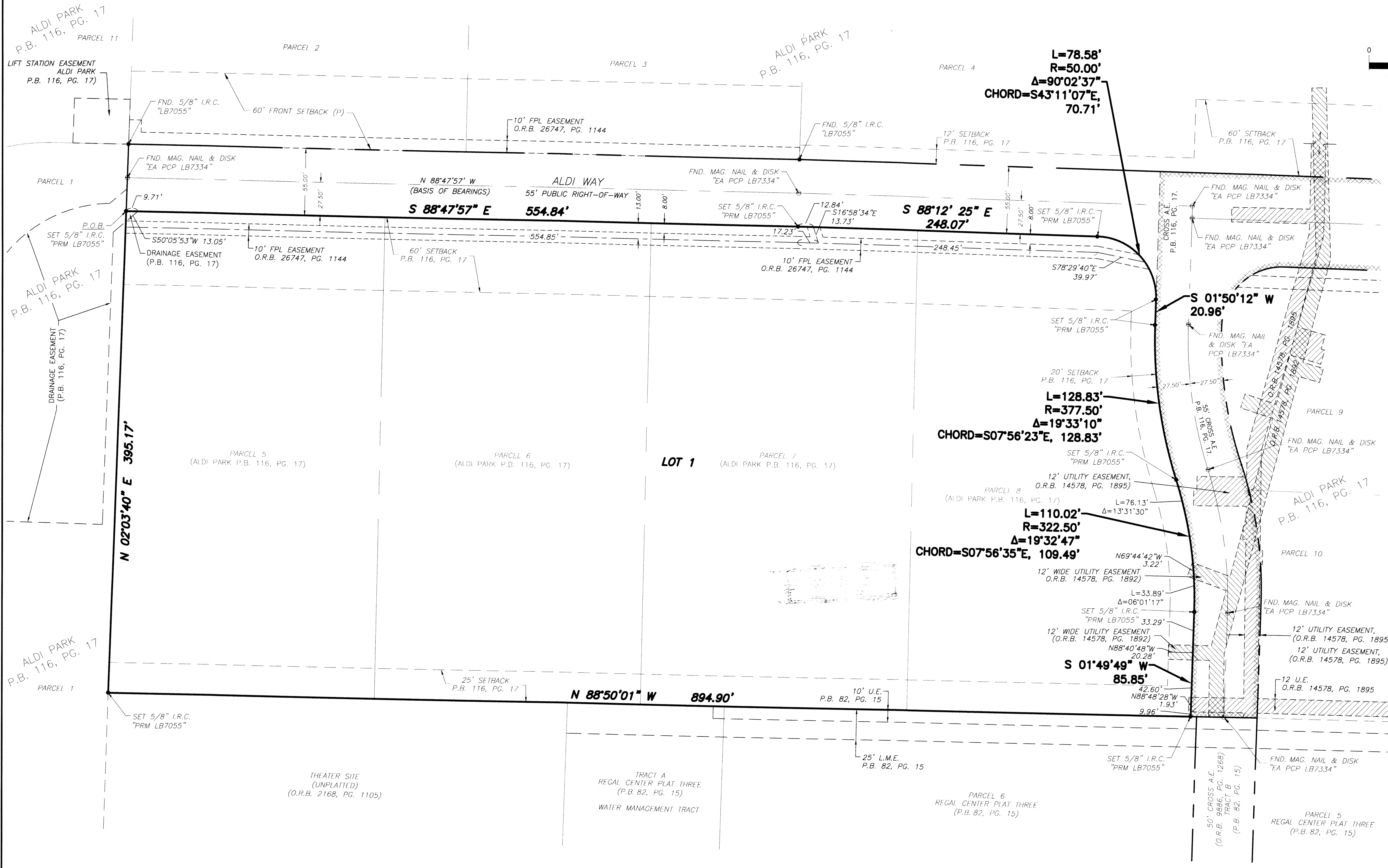
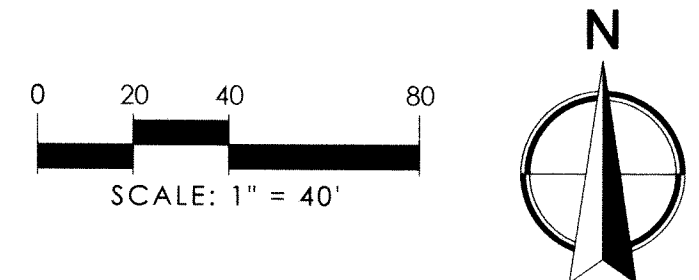


# ALDI WAY WAREHOUSE

BEING A REPLAT OF LOTS 5, 6, 7, AND 8 OF ALDI PARK AS RECORDED IN PLAT BOOK 116, PAGE 17 OF THE PALM BEACH COUNTY RECORDS, LYING IN SECTION 25, TOWNSHIP 43S, RANGE 41E, VILLAGE OF ROYAL PALM BEACH, PALM BEACH COUNTY, FLORIDA

STATE OF FLORIDA  
COUNTY OF PALM BEACH  
THIS PLAT WAS FILED FOR RECORD  
AT \_\_\_\_\_ THIS \_\_\_\_\_  
DAY OF \_\_\_\_\_ 2022 AND DULY  
RECORDED IN PLAT BOOK \_\_\_\_\_  
ON PAGES \_\_\_\_\_ THROUGH \_\_\_\_\_  
JOSEPH ABRUZZO  
CLERK OF THE CIRCUIT COURT &  
COMPTROLLER  
BY: \_\_\_\_\_  
DEPUTY CLERK



- LEGEND:**
- A E = Access Easement
  - FPL = Florida Power & Light
  - Fnd = FND
  - I.R.C. = Iron Rod and Cap
  - LB = Licensed Surveying Business
  - L = Arc Length
  - L.M.E. = Lake Maintenance Easement
  - MAG = Magnetic
  - NAD = North American Datum
  - O.R.B. = Official Records Book
  - P = Plat
  - PG = Page
  - PBCR = Palm Beach County Records
  - PCP = Permanent Control Point
  - PRM = Permanent Reference Monument
  - P.O.B. = Point of Beginning
  - PSM = Professional Surveyor & Mapper
  - P.B. = Plat Book
  - R = Radius
  - R/W = Right-of-Way
  - UE = Utility Easement
  - W = With
  - Δ = Delta

SHEET 2 OF 2

PREPARED BY:

2035 Vista Parkway, West Palm Beach, FL 33411  
Phone No. 866.908.2220 www.wginc.com  
Cert No. 6091 - LB No. 7055